



The New Midlander



September 2016 Number 275

Editor: Dr Ken Flint
e-mail: kenflint@btinternet.com

MIDLAND PHILATELIC FEDERATION **GENERAL MEETING**

The next meeting of the Midland Philatelic Federation will be held on Saturday October 29th 2016 at Arden School, Knowle, near Solihull. The Solihull Society are organising the Meeting and holding a stamp fair at the school. This venue has been used before and is easy to find. Travel details are on the website.

Please ensure that your society is represented at the Meeting as business is conducted which could impact on your society.

SIXTEEN-SHEET COMPETITION

The Individual sixteen-sheet competition will take place at Knowle. The entry form is included with this edition of the New Midlander and can also be found on the MPF website. The deadline for entries is October 17th 2016. The competition will be pre-judged and the results available at the exhibition.

A new name launched

A new society name will be seen in September. The Streetly Philatelic Society is changing its name to the Royal Sutton Coldfield Philatelic Society. This name change is principally to reflect more accurately where the society draws its members from - the Royal town of Sutton Coldfield.

For more information about the society, go to
<https://sites.google.com/site/midlandphilatelicfederation/home/societies/sutton-coldfield> or contact the society chairman, Steven Harrison at
sharrison500@btinternet.com

Bryan Jones Retires from Chair of MPF

At the Annual General Meeting at Worpex in May, Bryan Jones stepped down from the chair of Midland Philatelic Federation. Bryan has been chair for 12 years and was presented by Bob Harper with a bottle of single malt whisky in recognition of his long and productive service to the MPF. He has been replaced as chair by Dr Ken Flint who will also continue as editor of the New Midlander. Ken's role as President is now in the capable hands of Colin Searle. Two new committee members were formally elected to the committee – Steven Harrison of Royal Sutton Coldfield who has been print editor for a few months and Roger Williams of Dudley.



Obituary: Philip Mackey

It is with great sadness that we report the sudden death on 18th May of Philip Mackey aged 74. Philip was a long standing member of Solihull Philatelic Society where he had been President on more than one occasion. Philip will be remembered for the displays which he gave to Societies in the Midlands and further afield as well as for the many articles relating to his field of collecting. He was an active member of the RPSL, France & Colonies Philatelic Society, Postal History Society and the Great Britain Philatelic Society. His displays included Classic Great Britain Stamps & Postal History, The Siege of Paris & Commune, Classic France Stamps and Postal History amongst several others. He gave an invited display at a recent Philatelic Congress of Great Britain. Those who had the opportunity to see his displays were impressed by his knowledge and enthusiasm for the subject.

Philip was still active in his profession as a hydrologist and water engineering expert which involved him in projects both at home and abroad. He will be deeply missed by his wife Brenda, his three children and seven Grandchildren as well as by his many friends in philately and beyond.

John Barker

Obituary: Tom Poynton

Tom Poynton, the well-known philatelist in the midlands has died. Tom's main collecting interests were Portugal, particularly the World War One period and Portuguese colonies; anything connecting aerophilately and Portugal; the Peninsular Wars, and postal history associated with Elmdon, Birmingham's original airport. He was not only a collector but also a hard-working and enthusiastic member of several philatelic societies over the years, including the Portuguese Philatelic Society, the Birmingham PS and the Streetly PS where he was chairman on several occasions. Tom was also very much involved for many years with the Midlands Philatelic Federation as secretary and was instrumental in getting the first MidPex off the ground. He was also an Honorary Life Vice President of the Association of British Philatelic Societies.

Tom will be greatly missed.

Steven Harrison

SOCIETY REPORTS

Hereford & Mid Wales Philatelic Society

The Society is celebrating its 50th Anniversary this year and is planning a celebration dinner on the 5th October with a guest speaker Dane Garrod to entertain.

2015/16 has been a busy season for the Society with guest speakers, John Wilson, Alan Harley and John Mayne plus of course the usual membership evenings each month.

The 2016/2017 season has been prepared and in addition to the celebration dinner guest speakers Grace Davies and David Stirrups have been booked. In addition a member John Symons will be giving a display in May.

The AGM was held in June prior to the Annual Competitions, Nick Nelson the President said that the Society is going from strength to strength and that he was looking forward to his 2nd year in office.

Competition Winners.



The annual competitions were held in June and the photograph is of Frank Bennett on the left who won the Founder's Postal History Trophy with a display of the *Allen Shipping Line* and John Henshall on the right who won two trophies, The President's Cup with a traditional philately display of "*The Mozambique Company, 1895-1937*" and the Shingler Thematic Trophy with a display entitled. "*National Parks*"

Frank Bennett

Coventry Stamp and Postcard Club

Coventry Philatelic Society has re-branded itself as the Coventry Stamp and Postcard Club in recent years, reflecting the overlap between the two hobbies. In fact, so many of our number collect both stamps and postcards. Our May Annual General Meeting rounded off what was agreed had been a happy and successful season, attendance keeping up well. The committee continue in their posts unopposed and Mark Rollason is our new President. Mark is also doing a lot of interesting work on the club's archives as we commence our 70th year of the club as presently constituted. The club will be organising a meal in May 2017 to coincide with the 70th anniversary of the first meeting in May 1947.

We thank our entertaining outside speakers in the past year and of course we have had many good evenings with very varied offerings from our own members. We all do a stint but Ken Flint holds the club together! We shall advertise our activities during the summer in the hope of attracting some new faces when we meet again on Tuesday September 13th and then fortnightly 7.30 pm at Hearsall Baptist Church.

David Grimsey

Stratford upon Avon Philatelic Society



At our last full meeting of the 2015/2016 season, we were privileged to welcome our Patron, the Mayor of Stratford upon Avon, Tessa Bates. The presentation for the meeting was Colin Searle's increasingly magnificent array of material relating to the Philatelic Congress of Great Britain, the annual event arranged by ABPS. One of the most important pieces was a unique souvenir photograph album presented to the Countess of Warwick (then owner of

Warwick Castle) when the Congress visited Birmingham in 1911. The display was a feast of programmes, menus, cancellations, Congress stamps and much more. At the end of the display Colin presented The Mayor with a Congress miniature sheet showing Shakespeare publicity stamps, created when Congress came to Stratford upon Avon in 2008. Readers interested in the history and study of Congress material can see a wealth of material and information online by searching for "PCGB Congress" for the PCGB Study Group.

John Gledhill

Rugby and District Philatelic Society

From this September, Rugby and District Philatelic Society will no longer meet at the Percival Guildhouse in the town centre. The new venue is Overslade Community Centre, Buchanan Road, Rugby, CV22 6AY. We are making the move because the new venue has plenty of on-site and on-street parking, larger rooms, and everything is on the ground floor. As we are all getting older, that will make meeting easier.

Theo Shildermann

Change of Players at the ABPS

There has been a change of players at the ABPS, unfortunately mainly due to personal or family illness. Neil Ritchie has taken over as General Secretary from Willie King, and he recently sent me, as Hon. Secretary of the Leamington & Warwick P.S., the following e-mail.

"Since the beginning of this year I have volunteered to be the new General Secretary of the ABPS. Your letter regarding the Leamington & Warwick PS's disappointment with the direction the ABPS has been going has been passed to me so that I can fill you in with the new initiatives the Committee has instigated. Like yourself, although I must admit that I do enjoy entering competitions, I was concerned with the lack of broad connection between the ABPS and the general membership.

To this end the Executive Committee has charged three committee members and myself to form a Website sub-committee whose task is to develop the website as a resource for the general collector, we will of course be retaining all the items regarding competitions but will be expanding the website to include relevant content such as: all the information included in the ABPS handbook; developing a database to highlight societies so it can be used as a promotional tool; adding events and news from around the regions; promoting speakers and their displays; expanding the leaflet system to be on-line and include new subjects such as philatelic conservation techniques, a critical guide to insuring your collection, what to do in probate, etc.; forming an archive of power-point and visual displays that can be downloaded for Societies use; and other items as we develop them - hopefully in response to membership feedback.

We are also wanting to broaden the ABPS's connection to encompass collectors who are unable to join a society through illness, old age or work commitments but still enjoy this wonderful hobby of ours. As you can see it is an ambitious project that we hope to roll out the Website in time for Autumn Stampex. It will ultimately be a success if the membership joins in by helping to provide content and helpful feedback so that the website can become interesting and relevant.

We will be approaching all Societies in the first instance to provide the necessary information regarding themselves (beyond the secretary's contact details and address of meeting place etc.) such as a short (or long) history, photographs of meetings, syllabus and any other information the Society would like to provide.

I hope that this goes some way to answering your membership's concerns and if there are any comments generated by this email please contact me.

On a personal note I am willing to visit any Society to discuss the aims and objectives of the ABPS and also present a display, just let me know if this is welcomed."

Hopefully this initiative will allow some more progress to be visible to outsiders and the Societies that continue to support the ABPS. It was agreed at the MPF AGM held at Worpex on 14th May that the MPF would invite Neil to come along to the Autumn MPF Convention to let us know how things have progressed and hopefully to answer any questions that MPF member societies may have. I also replied to him from a Leamington & Warwick P.S. perspective saying that our major "wants" were (a) more members, (b) more available local speakers, and (c) lower costs, and that the ABPS could make more use of the internet and less of physical materials. From an MPF website perspective, I also asked that the ABPS linked to any material available on our site, but not to duplicate it as that would generate a maintenance nightmare.

Nick Bridgwater

Bletchley Park's Former Post Office is coming to visit the West Midlands.

The Little Post Office in Bletchley, was housed in the former Registry at Bletchley Park, and even though it was indeed small, it was a large player in the First Day Cover, Stamp Sheet (Smilers and Business) World for 21 Years.

Following its closure on 23rd April 2015, the Post Office was transferred to Oakham Treasures, an amazing Museum of Collections just off M5 Junction 19, sometimes known as the Bristol Postal Museum. A large collection of Post Boxes and Counters (probably worth millions of pounds) can also be found there. The former Bletchley Park Post Office lies in the Museum as one of their main attractions for Oakham Treasures.

The local Stamp Dealers and Societies, have for the past 21 years or more, entertained the Former Bletchley Park Post Office at their Fairs and Stamp meetings. The original gentleman behind its opening in 1994, John Chapman, has been an enthusiastic Stamp collector since 1962, and whilst still a Senior Guide at Bletchley Park, has in the last two years moved to the West Midlands.

John is bringing to the MPF Convention & Solihull P.S. Stamp Fair, at Arden School, a selection of Stamps, mainly used from all round the World, a quantity of Covers and Smiler Sheets issued in the 21 years at Bletchley Park Post Office, and a small part of John's vast collection - which he is gradually releasing following retirement in early 2016.

The reason for selling a large proportion of Alan Turing and Code Breakers Covers as well as many other items, is that John is spending his retirement speaking on Cruise Ships for Fred Olsen and P&O. His talks cover various history subjects and a selection of others like First Day Cover production linking with the history of Bletchley Park.

Anyone with a special interest can drop a note to John, as he has offered to try and bring any requests to the Fair on 29th October 2016. You can contact John on chadjman@gmail.com or by mobile 07850 239923.

Paul Woodness

Canadian Philatelic Society of Great Britain

The CPSGB is holding its annual convention at the Holiday Inn in Kenilworth from October 19th to 22nd. There are displays each morning and evening apart from the Saturday which is given over to the Society auction. Ken Flint is the President of the CPSGB this year and will be one of those giving a display. Anyone from local societies who wants to attend can do so as a day-visitor and if you want details of the displays then check out the CPSGB website or contact Ken.

The Post Office on the RAF Airfield at Wellesbourne

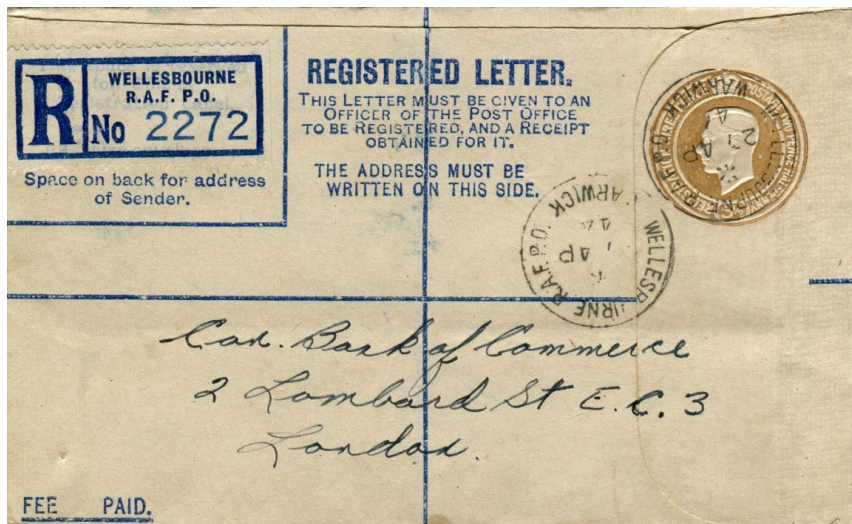
The post office at the Wellesbourne RAF Station operated between 7th June 1943 and 7th May 1953. Bryan Jones has kindly given me the following information about their activities:

Early in 1941, 200 acres of farm land was purchased by the Government six miles east of Stratford-on-Avon, adjacent to the village of Wellesbourne Mountford in order to create a new airfield. By April 1941, the farmhouse of the previous owners, the Littler family, had been demolished and replaced by two runways.

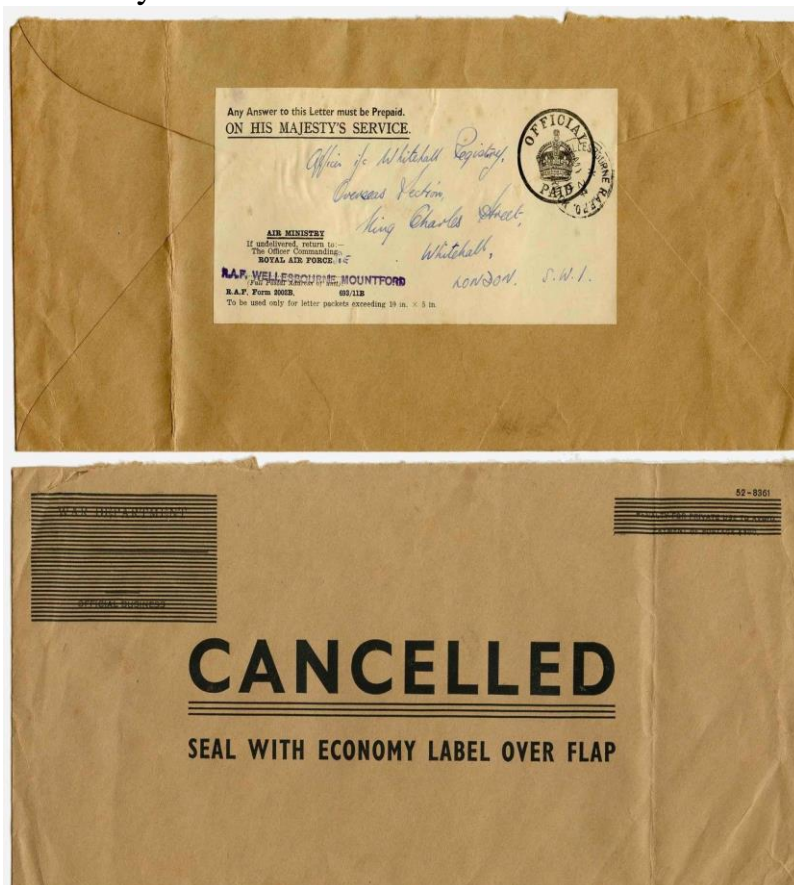
On April 14th No 22 Operational Training Unit (OTU) was formed, devoted to the training of UK and Commonwealth aircrews. At the time of this letter (April 1944), Wellesbourne was turning out 113 aircrews every month. No 22OTU was based at Wellesbourne throughout its existence, finally being disbanded in late July 1945. The squadron was equipped with Wellington bombers, supplemented with Avro Anson navigational trainers. In 1942, aircraft from Wellesbourne took part in the 1000 bomber raids over Germany.

During the war 96 Wellingtons were lost in operational and training accidents with 80 aircrew injured and 315 killed, of whom 243 were Canadians.

Covers are very scarce. I know of only two. This registered cover is from a Canadian member of the RAF.



And one with an economy return label.



Three different types of registration labels have been recorded.



John Gledhill

Stafford Stamp Show

Friday 4th November 2016 - Saturday 5th November 2016
Doors open Friday 10 am – 5 pm and Saturday 10 am – 4 pm.

FREE ADMISSION

50 plus National & International Dealers
Dealers Attending & Room Plan will be available closer to date.

The show is held at the Staffordshire County Showground, which is situated on the A518 Stafford to Uttoxeter Road.

This fair is organised by John Rice who also holds regular fairs around the Midlands in Sutton Coldfield, Kenilworth and Lichfield and occasionally in Loughborough. More details can be found on his website <http://jrs-stamp-shows.co.uk>

Please support these fairs.

The **Telford Stamp, Card and Coin Fairs** are held quarterly on the second Saturday of January, April, July and October each year and are held in the Belmont Community Hall, adjacent to the Tan Bank Car Park in Wellington Centre, Telford, TF1 1LU. The fairs are organised by Telford Philatelic Society. Entry is free and the fairs are open from 10 am to 3 pm. Free parking is adjacent to the hall. Both train and bus stations are nearby for those who cannot travel by car.

If there are any dealers out there who wish to have a table at this well-attended fair then contact Bob Hemmings (01694-771880 or bob@kenleycommon.plus.com).

Next Fair

2016 – October 8th

BIRMINGHAM POSTCARD FAIR

Simon Collyer has agreed a new location to replace the stamp, postcard and cigarette card fair that was held at the Nautical Club and briefly last year at the Irish Centre in Digbeth.

It will be at the Walker Memorial Hall on Ampton Road, Edgbaston, B15 2UJ on the last Wednesday of every month from March to November. The dates for this year are therefore 25th May, 29th June, 27th July, 31st August, 28th September, 26th October, and 30th November.

The fair is open between 9:30 am and 3:30 pm. There is free admission, a free car park and free tea and coffee.

Buses number 98 and 99 stop close by. For the more energetic, it is located half way between the Five Ways and University train stations.

Simon is a well-known organiser of stamp and postcard fairs in the Midlands under the name AMP Fairs (especially the twice yearly show at the Motorcycle Museum) and deserves our support at this new venue.

If anyone has any questions, please contact Simon on 0123820151.

Hinckley and District Philatelic Society's Annual Fair and Exhibition

Hinckley and District Philatelic Society is pleased to announce that it will be holding its Annual Autumn Fair and Exhibition on Sunday, 9th October 2016 from 10.00 – 15.00 at the Hinckley Academy and John Cleveland 6th Form College, Butt Lane, Hinckley, LE10 1LE (Previously John Cleveland College).

Entry to the Fair and Exhibition is free, as is the ample car parking. Light refreshments will be available throughout the day. There will be a raffle with a genuine 1840 QV 1d black as first prize. For further details contact Richard Flemming on 01455 613826.

Richard Flemming

SOCIETY DIARY

If your society is not represented in this list it is because neither Nick Bridgwater nor Ken Flint has copies of your programme for 2016 – 2017. Please send us one!!

Sept 1 st	Mini-Auction	Members	Redditch
Sept 1 st	Postcards, Postal History etc. 1900-2	Members	Northampton
Sept 2 nd	Germany	Philip Fearnley	Nottinghamshire
Sept 6 th	Informal Meeting	Members	Solihull
Sept 6 th	Letters 'J', 'K' and 'L'	Members	Sutton Coldfield
Sept 6 th	Cape of Good Hope	Robert Johnson	Burton on Trent
Sept 7 th	Letters 'P', 'Q' and 'R'	Members	Hereford
Sept 7 th	Recent Acquisitions	Members	Stratford
Sept 8 th	Up to 16 sheets 'Water'	Members	Solihull (morning)
Sept 8 th	Recent Acquisitions	Members	Loughborough
Sept 8 th	New Acquisitions	Members	Wombourne
Sept 8 th	President's Evening	Steven Street	Derby
Sept 10 th	Death By Post	Claire Scott	Midland Postal History Society
Sept 12 th	Introductory Evening - New Acquisitions	Members	Rugby
Sept 13 th	New Acquisitions and Bourse	Members	Coventry
Sept 13 th	The Dodecanese Islands	Paul Woodness	Solihull
Sept 13 th	The best things in life are	Members	Sutton Coldfield (morning)
Sept 13 th	Letter 'A' / Mini Auction / Bring and Buy Sale	Members	Dudley
Sept 14 th	Introductory Wine & Cheese Evening	Members	Leamington
Sept 15 th	Tramways	Keith Downing	Redditch
Sept 20 th	Trans-Siberian Railway 1903 - 1917	Peter Pugh	Solihull
Sept 20 th	Sport - "Athletics"	Michael Chapling	Sutton Coldfield
Sept 20 th	Flying at the City of Bass	Richard Farman	Stafford
Sept 21 st	G. B. Registered Mail 1883 - present	Steven Harrison	Stratford
Sept 22 nd	The Moonraker Returns	Malcolm Watts	Wombourne
Sept 23 rd	British West Indies Bermuda	Ian Jakes Peter Fernbank	Nottinghamshire
Sept 24 th	Thematic Mix	Brian Buck	Loughborough
Sept 26 th	New Zealand - the Definitive Story	Brian Stonestreet	Rugby
Sept 27 th	Letters 'S', 'T' and 'A'	Members	Coventry
Sept 27 th	Russia – the Great War, Revolution and Beyond	Neil Ritchie	Solihull
Sept 27 th	Across The Middle East by Land and Air	Laurence Kimpson	Dudley
Sept 28 th	Steel City - Sheffield's Postal and Industrial History	Clive Jones	Leamington
Sept 28 th	Annual General Meeting	Members	Birmingham
Oct 4 th	British West Indies Miscellany	W Gibb	Solihull
Oct 4 th	And the Dawn comes up like Thunder	Peter Pugh	Sutton Coldfield
Oct 4 th	American Civil War – Confederate States	John Walker	Burton on Trent
Oct 5 th	50 th Anniversary Celebration Dinner	Members	Hereford
Oct 5 th	The Letter 'L'	Members	Stratford
Oct 6 th	Tristan da Cunha	Austin Mears	Wombourne
Oct 6 th	GB Registered Mail	Steven Harrison	Redditch

Oct 6 th	Life and Times of a G.P.	Gerald Lovell	Northampton
Oct 10 th	Queen Elizabeth II	Members	Rugby
Oct 11 th	St Vincent	Terry Harrison	Coventry
Oct 11 th	Great Britain Postal History	D Davies	Solihull
Oct 11 th	Aspects of Japan	Bill Pile	Sutton Coldfield (morning)
Oct 11 th	Another Bloody Railway-Part 2	Peter Pugh	Dudley
Oct 12 th	Visit from Banbury Stamp Society		Leamington
Oct 13 th	Up to 16 Sheets – Anything Goes	Members	Solihull (morning)
Oct 13 th	Letter ‘I’	Members	Loughborough
Oct 17 th	Small Islands	Members	South Midlands (afternoon)
Oct 18 th	Mining and Minerals – Diamonds and Gold	Theo Schilderman	Solihull
Oct 18 th	Those were the days	Members	Sutton Coldfield
Oct 18 th	TBA		Stafford
Oct 19 th	19 th Century Transatlantic Mail	Frank Bennett	Stratford
Oct 20 th	Wombourne Stampex	Members	Wombourne
Oct 20 th	Visit by Hinckley and District PS		Redditch
Oct 21 st	Nottinghamshire Postal History and Birds	Alan Marshall	Nottinghamshire
Oct 24 th	To the Ends of the Earth (polar)	Alan Godfrey	Rugby
Oct 25 th	Canada Through the Ages	Alan Spencer	Coventry
Oct 25 th	Indian Mutiny	M Smith	Solihull
Oct 25 th	Togo-The First German Colony 1884-1914	John Mayne	Dudley
Oct 26 th	Channel Islands' Postal History	Richard Flemming	Leamington
Oct 27 th	X-Rays	Brian Brandon	Loughborough
Oct 29 th	One Board Displays – Parcel Post	Members	Midland Postal History Society
Nov 1 st	Burton's Railways	Ian Gibson	Burton on Trent
Nov 1 st	Penny Blacks	N Sudborough	Solihull
Nov 1 st	The Falkland Islands in Stamps	Alan Godfrey	Sutton Coldfield
Nov 2 nd	Peace	Grace Davies	Hereford
Nov 2 nd	Bangladesh - Civil War to Nationhood China 1900 - The Boxer Rebellion	Michael Silverns Mick Britton	Stratford

Rugby Stamp Fair

Simon Hemmings of Midland Philatelics Ltd based in Rugby will still be holding his bi-monthly Thursday stamp fair in Rugby during 2016.

The fair is held at Rogers Hall, Deering Road, Hillmorton CV21 4EN

The event will open at 9.30 am and close at 3.00 pm.

**The next date in 2016,
October 6th**

**THERE WILL ALSO BE A SUNDAY FAIR HELD AT
THE BENN HALL, RUGBY CV21 2LN
ON 27TH NOVEMBER 2016 FROM 10 AM TO 4 PM.**

Free parking, Free admission and Refreshments available at all fairs.

MPF 16-sheet — Individual Competitions

Knowle, Solihull — Saturday October 29th 2016

We are continuing the “Open Frames” competition concept which has worked so successfully at recent MPF Competitions. This has the advantage that you do not need to send your expensive items in the post. They will be pre-judged so the results will be available from the start of the Exhibition.

Please post photocopies or printed scans of your entries **with protectors** to:-

Post to Clive Murray, 53, Wrens Avenue, TIPTON DY4 8AF

Email clivemurray33@gmail.com

• Physically bring them to the South Midland Stamp Club in Barford, near Warwick on October 17th 2016.

All are 16 sheet entries:- There will be five competitions with sections as below:-

Traditional Stamps Postal History

Thematic Aerophilately

Open Class

The Open Class section may have anything that is not covered in the first 4 sections and may include postcards, ephemera, entire letters, postal orders etc.

Title of Entry _____

Name _____

Address _____

Post Code _____

Telephone No. Home _____ Mobile _____

e-mail _____

Signature _____

Society _____

All entries will be acknowledged by email.

CLOSING DATE FOR ENTRIES Monday October 17th